

## ACKNOWLEDGEMENT

The Editorial Board would like to thank and express appreciation to all peer reviewers who have reviewed the manuscripts for publication of Tropical Animal Science Journal Vol. 47 No. 1 Year 2024

Abdul Razak Alimon	Faculty of Agriculture, Universiti Putra Malaysia, Malaysia
Ahmad Sofyan	Research Center for Animal Husbandry, National Research and Innovation Agency (BRIN), Indonesia
Anis Mukhtiani	Faculty of Animal and Agricultural Sciences, Diponegoro University, Indonesia
Anjas Asmara Samsudin	Faculty of Agriculture, Universiti Putra Malaysia, Malaysia
Anusorn Cherdthong	Department of Animal Science, Khon Kaen University, Thailand
Atien Priyanti	Indonesian Center for Animal Research and Development (ICARD), Indonesia
Cahyo Budiman	Faculty of Animal Science, IPB University, Indonesia
Cecep Hidayat	Research Center for Animal Husbandry, Research Organization for Agriculture and Food, National Research and Innovation Agency of Indonesia, Indonesia
Chalong Wachirapakorn	Department of Animal Science, Khon Kaen University, Thailand
Damiano Cavallini	Department of Veterinary Medical Science, University of Bologna, Italy
Dilla Mareistia Fassah	Faculty of Animal Science, IPB University, Indonesia
Edi Suryanto	Faculty of Animal Science, Universitas Gadjah Mada, Indonesia
Eric Lim Teik Chung	Faculty of Agriculture, Universiti Putra Malaysia, Malaysia
Halimatun Yaakub	Faculty of Agriculture, Universiti Putra Malaysia, Malaysia
Imam Mustofa	Faculty of Veterinary Medicine, Airlangga University, Indonesia
Junichi Takahashi	Obihiro University of Agriculture and Veterinary Medicine, Japan
Karim El-Sabrouh	Alexandria University, Egypt
Krido Brahmo Putro	Independent Researcher/Practitioner, Indonesia
Lilis Khotijah	Faculty of Animal Science, IPB University, Indonesia
Mohamad Agus Setiadi	Faculty of Veterinary Medicine, IPB University, Indonesia
Metha Wanapat	Faculty of Agriculture, Khon Kaen University, Thailand
Nena Hilmia	Faculty of Animal Husbandry, Padjadjaran University, Indonesia
Niken Ulupi	Faculty of Animal Science, IPB University, Indonesia
Panjono	Faculty of Animal Science, Universitas Gadjah Mada, Indonesia
Retno Murwani	Faculty of Animal and Agricultural Sciences, Diponegoro University, Indonesia
Roni Ridwan	Research Center for Applied Zoology, National Research and Innovation Agency (BRIN), Indonesia
Sofjan Iskandar	Indonesian Research Institute for Animal Production (IRIAP), Indonesia
Sucik Maylinda	Faculty of Animal Science, Brawijaya University, Indonesia
Sugiharto	Faculty of Animal and Agricultural Sciences, Diponegoro University, Indonesia
Suharyanto	Faculty of Agriculture, University of Bengkulu, Indonesia
Sumiati	Faculty of Animal Science, IPB University, Indonesia
Tety Hartatik	Faculty of Animal Science, Universitas Gadjah Mada, Indonesia
Tita Damayanti Lestari	Faculty of Veterinary Medicine, Airlangga University, Indonesia
Yuan-Yu Lin	Department of Animal Science and Technology, National Taiwan University, Taiwan (R.O.C.)



## INSTRUCTIONS TO AUTHORS

### Tropical Animal Science Journal

#### (Revised Edition 2024)

#### GENERAL INFORMATION

1. Manuscripts must be original, have not been published previously in any scientific journal, that manuscripts are not being submitted for publication elsewhere, and will not be submitted to any media during the review process, unless the authors have officially withdrawn the manuscripts from Tropical Animal Science Journal. Tropical Animal Science Journal uses a similarity check program to prevent any suspected plagiarism in the manuscripts.
2. Each author with an initial (e.g. KGW for Komang Gede Wiryawan) should indicate his/her specific contribution to the manuscript. There are several categories, i.e concept and design of the study, acquisition of data, analysis of data, interpretation of data, drafting the manuscript, critical review/revision, and others. The statement must be declared in the author statement form (Form A).
3. Tropical Animal Science Journal accepts equal contribution for the first author. TASJ also allows multiple corresponding authorship for one article. Only one author should correspond with the editorial office for one article.
4. Form A is an author statement form containing several conditions that the authors must comply with, who will submit their manuscript to TASJ. Those conditions are Author Responsibility, Publication Fee, Author Contributions, Disclosure of Conflicts of Interest, Institutional Animal Care and Use Committee (IACUC) Approval, and Copyright Transfer Agreement.
5. Manuscripts submitted are research topics that have no conflict with bioethical research.
6. Manuscripts encompass a broad range of research topics in tropical animal sciences: breeding and genetics, reproduction and physiology, nutrition, feed sciences, agrostology, animal products, biotechnology, behaviour, welfare, health and veterinary, livestock farming system, integrated farming system, socio-economic, and policy.
7. Starting from the year 2020, the journal is published FOUR times a year, i.e. March, June, September, and December.
8. **The manuscripts, Form A, and IACUC approval letter** should be submitted electronically through an online system: <https://journal.ipb.ac.id/index.php/tasj>

#### MANUSCRIPT FILE

1. Manuscripts are written in English and use standard scientific usage. Authors whose first language is not English should consult the manuscript with an English editing service before submitting it to Tropical Animal Science Journal.
2. Manuscripts should be prepared in Microsoft Word format, except for Graphs using Microsoft Excel program and Figures using JPEG or PDF format.
3. Manuscripts should be typed using Times New Roman fonts at 12 points.
4. Manuscripts should be typed double spaced except for Title, Tables, Title of Graphs/Figures, and appendix typed single spaced. Manuscripts are prepared in A4 paper, margins on all four sides are 3 cm, and total number of pages is 12-20.
5. Tables, Graphs, and Figures should be placed after the References of the manuscript.
6. Use page numbers and line numbers.
7. Manuscripts content should be arranged as the following order: Title, Name of the author(s) and their institutions, Abstract, Introduction, Methods (for Socio-Economic), Materials and Methods (for non Socio-Economic),

Results, Discussion, Conclusion, Conflict of Interest, Acknowledgment (if any), References.

#### CONTENT OF MANUSCRIPTS

1. **Title** must be brief, clear, specific, and informative which reflects the article content. The length of the title maximum 14 words. Each word of the title should be started with capitalized letter.
2. **Name of author(s)** are written as references.
3. **Name of institution(s)** where the research was conducted must be accompanied with the full address including institution/department, city, and country, and e-mail.
4. **Abstract** must be written in English, in a single paragraph and no more than 250 words. Abstracts contain a clear statement of introduction, objective, methods, results/significance of the finding, and conclusion, with no references cited.
5. **Keywords** should be written in no more than 5 (five) words or phrases.
6. **Introduction** describes a brief background of the research, state of the arts, novelty, and objective(s). It should be written efficiently and supported by references and no more than 2 pages. Extensive discussion of relevant literature should be included in the discussion, not in the introduction.
7. **Materials and Methods**
  - a. It should be written clearly and completely containing a clear description of biological, analytical, and statistical procedures; so they can be repeated by other researchers. References of original methods/procedures must be stated and all modifications of procedures (if any) should be explained. Diets and animal conditions (breed, sex, age, body weight, and weighing conditions [i.e., with or without restriction of feed and (or) water]) also should be described clearly and fully.
  - b. Authors should ensure that studies involving animals are performed according to animal ethics and welfare. All experimental animals should be cared for and used in compliance with international, national or local regulations. **The authors are obliged to state explicitly in the method and attach a letter containing the name of the ethics authority and the approval number that experiments were approved by an authority concerning compliance with animal ethics and welfare.**
  - c. Authors should state clearly information of commercial product and equipment used in the research, such as commercial name, product/equipment specification, city, and country.
  - d. Appropriate statistical methods should be used, although the biological mechanism should be emphasized. The statistical model, classes, blocks, and experimental unit must be designated. Consultation with a statistician is recommended to prevent any incorrect or inadequate statistical methods.
8. **Results**
  - a. Data should be presented in Tables or Figures when feasible. There should be no duplication of data in Tables and Figures. Sufficient and comprehensive data followed with some index of variation (SEM pool) and significance level (e.g.,  $p < 0.01$ ) should be presented to give a complete information and allow the reader to interpret the results of the experiment.
  - b. The text should explain or elaborate the tabular data, but numbers should not be repeated extensively within the text.

9. **Discussion** should be consistent and should interpret the results clearly and concisely, address biological mechanism and their significance, supported with suitable literature. The discussion should show relevance between the results and the field of investigation and/ or hypotheses. Results that are already described in the RESULTS section should not be repeated in the DISCUSSION section.
9. **Conclusion** should be written briefly in a single paragraph but reflects the experimental results obtained. Conclusion should answer the objective of the research. Implication of results should be added stating what the findings of this research imply for animal production and (or) biology.
10. **Conflict of Interest** should be stated clearly in the manuscript. Authors should clarify that there is no conflict of interest with any financial, personal, or other relationships with other people or organizations related to the material discussed in the manuscript.
11. **Acknowledgement** (if any) to person(s) or institution(s) who help the experiment should be stated. Authors should also state the name and the number of the project.

#### 12. References:

- a. Please ensure that every reference cited in the text is also present in the reference list (and vice versa). We suggest authors use reference manager applications, such as EndNote, Mendeley, etc., to prepare citations and the list of references.
- b. References should be the last 10 year publication, with minimum 80% of journal.
- c. Citing a citation, such as Morris *in* Miftah *et al.* (2008), and using 'Anonym' as reference **are not allowed**.
- d. Authors should not use proceeding, thesis, and dissertation as references.
- e. The electronic publications are only allowed to use, if those are published by a competent source, such as journal and government or private institution. The accessed date should be put after the last sentence, except for journal.
- f. Reference citations in the text: Takahashi (2014) or (Takahashi, 2014); O'neil *et al.* (2006) or (O'neil *et al.*, 1974); Priyanto & Johnson (2011) or (Priyanto & Johnson, 2011).
- g. References should be listed alphabetically by the author(s) last name(s) and the year of publication. If a reference has a digital object identifier (DOI), it should be written. For journals, author(s), year, title of the article(s), journal name, volume and number of publication, and pages. Journals should be abbreviated according to the conventional abbreviation used by Pubmed (<http://www.ncbi.nlm.nih.gov/nlmcatalog/journals>). For books, the order is all author(s), year, title of the book, name and place of publisher. For book chapter: author(s), year, title of the article, editor(s), book title, name and place of publisher.
- h. Some examples of references are presented below:

#### Journal

- Samadi, S., S. Wajizah, & A. Munawar.** 2018. Rapid and simultaneous determination of feed nutritive values by means of near infrared spectroscopy. *Trop. Anim. Sci. J.* 41:121-27. <https://doi.org/10.5398/tasj.2018.41.2.121>.
- Kim, E. S., T. S. Sonstegard, C. P. Van Tassell, G. Wiggans, & M. F. Rothschild.** 2015. The relationship between runs of homozygosity and inbreeding in Jersey cattle under selection. *PLoS ONE* 10: e0129967. <https://doi.org/10.1371/journal.pone.0129967>
- Marbacher, S., K. Elisabeth, L. Schwyzer, I. Fischer, E. Nevzati, M. Diepers, U. Roelcke, A. R. Fathi, D. Coluccia, & J. Fandino.** 2014. Use of fluorescence to guide resection or biopsy of primary brain tumors and brain metastases. *Neurosurgical Focus FOC* 36: E10. <https://doi.org/10.3171/2013.12.FOCUS13464>.

#### Books and Book Chapters

- Latimer, G. W. Jr.** 2019. *Official Methods of Analysis of AOAC International*. 21<sup>st</sup> ed. AOAC International; Maryland.
- National Academies of Sciences, Engineering, and Medicine.** 2016. *Nutrient Requirements of Beef Cattle: 8<sup>th</sup> Rev. Ed.* The National Academies Press, Washington, DC. <https://doi.org/10.17226/19014>.
- Field, T. G. & R. E. Taylor.** 2015. *Scientific Farm Animal Production: An Introduction to Animal Science*. 11<sup>th</sup> ed. Pearson Prentice Hall, Upper Saddle River, NJ.
- Roux, S. J. & G. Clark.** 2019. *Extracellular ATP Signaling in Animals and Plants: Comparison and Contrast*. In: S. Sopory. (Ed.). *Sensory Biology of Plants*. Springer, Singapore. [https://doi.org/10.1007/978-981-13-8922-1\\_15](https://doi.org/10.1007/978-981-13-8922-1_15)

#### Electronic Publications

- Kim, E. S., T. S. Sonstegard, C. P. Van Tassell, G. Wiggans, & M. F. Rothschild.** 2015. The relationship between runs of homozygosity and inbreeding in Jersey cattle under selection. *PLoS ONE* 10: e0129967. <https://doi.org/10.1371/journal.pone.0129967>
- IUCN.** 2012. *IUCN Red List Categories and Criteria: Version 3.1. 2<sup>nd</sup> Ed.* IUCN, Gland and Cambridge. <https://portals.iucn.org/library/sites/library/files/documents/RL-2001-001-2nd.pdf> [December 22, 2021].
- Aviagen.** 2018. *Ross Broiler Management Handbook*. [http://eu.aviagen.com/assets/Tech\\_Center/Ross\\_Broiler/Ross-BroilerHandbook2018-EN.pdf](http://eu.aviagen.com/assets/Tech_Center/Ross_Broiler/Ross-BroilerHandbook2018-EN.pdf) [December 22, 2021].

#### TABLES, FIGURES, AND GRAPHS

##### 1. Table:

- a. Tables should be prepared using Microsoft Word Table function, select Insert>Table and follow the instruction. Please do not separate cells into rows and columns by using tabs and spaces. Herewith a sample table constructed correctly:

	Column head	Column head	Column head
Row head			
Row head			
Row head			

- b. Tables should be clear and could stand alone (giving a complete information and could be understood without referring to the body of manuscript). All tables should be cited in the text and should not duplicate data already given in the text or in figures.
- c. The title should be brief and clear. Only the initial word is capitalized, typed above the table, and numbered using Arabic number. The title for socio-economic should be completed with research time and location.
- d. Separating lines should be made horizontal (three lines) to separate head of column (treatment) and data, and closing line.
- e. Data should be completed with standard error of the mean (SEM) to figure out its variation.
- f. Footnote for statistical analysis should be written: "Means in the same column/row with different superscript differ significantly ( $p < 0.05$ ) or highly significant ( $p < 0.01$ )".
- g. Each abbreviation or symbols should be described in footnote.

## 2. Figure and Graph

- Title should be brief and clear, located under the Figure or Graph. Only the initial word is capitalized and numbered with Arabic number.
  - Symbols and description of Figure and Graph should be defined in title that would give a complete information and could stand alone.
  - Figures should be prepared and the types are readable at the final size of publication, one column (8 cm wide) or full-page width (17 cm wide). Use Palatino Linotype and Times New Roman font types only. A minimum type size of 8 points (after reduction) should be used.
- Please also remove unnecessary backgrounds and grid lines from graphs.
- For bar charts, should be made in 2-dimension and should use stripes as fill patterns, not a solid or block shading. Each axis should have a description and a unit.
  - For line graphs, use a minimum stroke weight of 1 point for all lines. If multiple lines are to be distinguished, use solid, long-dash, short-dash, and dotted lines; avoid the use of gray or shaded lines. Please use the following symbols to identify curves and data points: □, ■, ○, ▲, △, ◇, ◆, +, and ×.

## Example of Table, Figure, and Graph

Table 1. Ingredients and nutrient composition of basal diet (g/kg)

Ingredients	Starter (Days 1-10)	Grower (Days 11-24)	Finisher (Days 25-42)
Maize (8 g CP/kg)	526.95	580.75	624.15
Soybean oil	23.6	22.6	32.2
Soybean meal (44 g CP/kg)	381.2	331.0	311.0
DL- Methionine 99%	2.5	2.5	1.8
L-Lysine, HCl	1.8	1.5	0.5
Limestone	14.0	12.0	11.3
Maize gluten	30.0	30.0	-
Sodium bicarbonate	1.0	1.0	1.0
Common salt	3.0	3.0	3.0
Vitamin premix <sup>a</sup>	2.5	2.5	2.5
Mineral premix <sup>b</sup>	2.5	2.5	2.5
Dicalcium phosphate	10.9	10.6	10.0
Phytase (10000 FTU/kg)	0.05	0.05	0.05
Nutrient composition <sup>c</sup>			
Metabolizable energy (MJ/kg)	12.5	12.8	13.0
Crude protein (g/kg)	231.0	214.0	189.0
Digestible lysine (g/kg)	12.7	11.3	9.8
Digestible methionine +cystine (g/kg)	9.50	9.05	7.6
Calcium (g/kg)	10.0	8.9	8.5
Available phosphorus (g/kg)	4.5	4.4	4.2
Sodium (g/kg)	1.6	1.6	1.6
Chloride (g/kg)	2.3	2.3	2.2

Note: <sup>a</sup>= Vitamin premix provided following amounts per kilogram of diet: vitamin A (retinyl acetate), 15,000 IU; vitamin D3, 5,000 IU; vitamin E (dl- $\alpha$ -tocopheryl acetate), 80 mg; vitamin K, 5 mg; thiamin, 3 mg; riboflavin, 10 mg; pyridoxine, 5 mg; vitamin B12, 0.02 mg; niacin, 70 mg; choline chloride, 350 mg; folic acid, 2 mg; biotin, 0.4 mg; and pantothenic acid, 20 mg.

<sup>b</sup>= Mineral premix provided following amounts per kilogram of diet: Mn (manganese sulphate), 100 mg; Zn (zinc sulphate), 65 mg; Cu (copper sulphate), 5 mg; Se (sodium selenite), 0.22 mg and I (calcium iodate), 0.5 mg.

<sup>c</sup>= Determined using individual feed analysis results.

Table 2. Growth and economic performances of Indonesian crossbred chickens given experimental diet up to 10 weeks of age

Variables	Treatments					SEM	p value
	LSD	HSD	HSD+mE	HSD+FPLS	HSD+FPLS+mE		
Final BW, g	863	857	868	863	889	5.45	0.43
Weight gain, g	621	622	633	628	653	5.51	0.37
Cumulative FI, g	2,503 <sup>a</sup>	2,160 <sup>b</sup>	2,103 <sup>b</sup>	2,175 <sup>b</sup>	2,131 <sup>b</sup>	48.8	0.04
FCR	4.03 <sup>a</sup>	3.47 <sup>b</sup>	3.33 <sup>b</sup>	3.47 <sup>b</sup>	3.26 <sup>b</sup>	0.08	0.01
Feed cost per weight gain (IDR) <sup>1</sup>	25,081 <sup>a</sup>	21,558 <sup>b</sup>	20,732 <sup>b</sup>	20,033 <sup>b</sup>	18,850 <sup>b</sup>	565	<0.01
Income over feed cost (IDR) <sup>2</sup>	2,559 <sup>c</sup>	4,552 <sup>b</sup>	5,138 <sup>ab</sup>	5,553 <sup>ab</sup>	6,351 <sup>a</sup>	343	<0.01

Note: Means in the same row with different superscripts differ significantly ( $p < 0.05$ ).

<sup>1</sup>= Calculations were conducted at the period of investigation as the cost of feed ingested to reach a kilogram of live body-weight gain; <sup>2</sup>= Calculations were conducted at the period of investigation as the entire income minus entire feed cost; LSD= chicks fed conventional feed at low stocking density; HSD= chicks fed conventional feed at high stocking density; HSD+mE= chicks fed conventional feed plus multienzyme at high stocking density; HSD+FPLS= chicks fed FPLS at high stocking density; HSD+FPLS+mE= chicks fed FPLS plus multienzyme at high stocking density; BW= body weight; FCR= feed conversion ratio; FI= feed intake, IDR= Indonesian Rupiah (Indonesian currency); SEM= standard error of means.

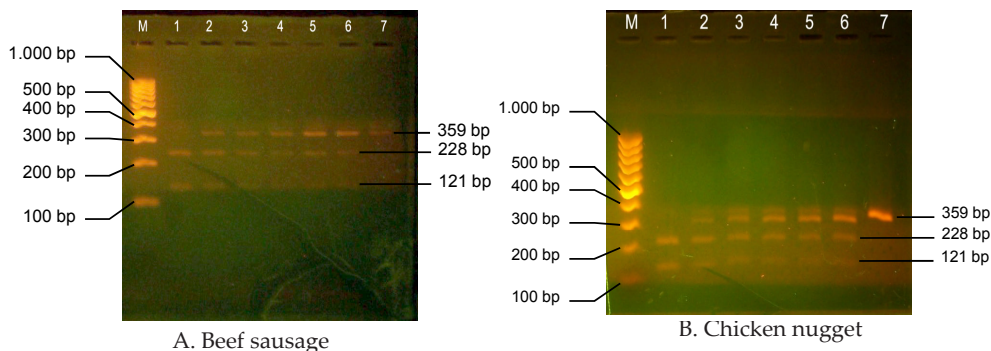


Figure 1. BseDI restriction profile of cytochrome b PCR product amplified from samples. (A) M= 100 bp ladder size standard; 1= pork (100%); 2= (beef 75% : pork 25%); 3= (beef 90% : pork 10%); 4= (beef 95% : pork 5%); 5= (beef 97% : pork 3%); 6= (beef 99% : pork 1%); 7= beef 100%. (B) M= 100 bp ladder, 1= pork (100%); 2= (chicken 75% : pork 25%); 3= (chicken 90% : pork 10%); 4= (chicken 95% : pork 5%); 5= (chicken 97% : pork 3%); 6= (chicken 99% : pork 1%); 7= chicken (100%).

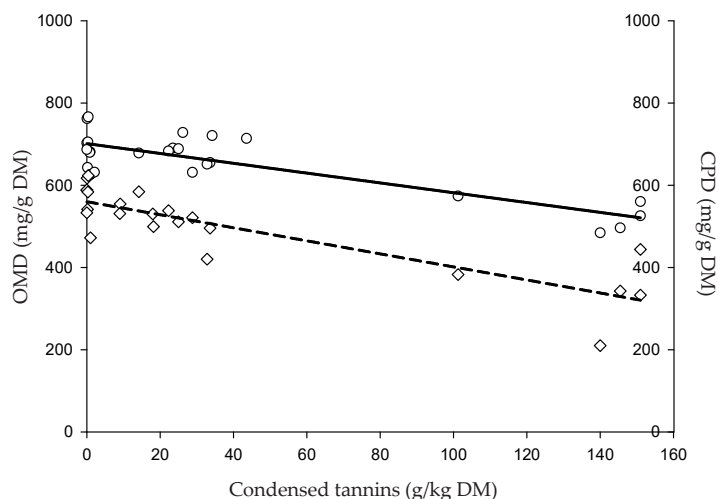


Figure 2. Relationships between dietary condensed tannin concentration and organic matter digestibility (OMD) (-o-, full regression line;  $OMD = 701.2 - 1.19 CT$ ,  $p < 0.001$ ,  $R^2 = 0.701$ ) and crude protein digestibility (CPD) (-◇-, dashed regression line;  $CPD = 559.7 - 1.59 CT$ ,  $p < 0.001$ ,  $R^2 = 0.730$ ) in the *in vivo* studies.

f. Figures must have good resolution. Preferred format for figures are Word, JPEG, and PDF. Minimum resolution is 300 dpi for color and grayscale figures and 600 dpi for line art. Please consider that color figures/images for print journal will be charged separately.

**ADDITIONAL NOTES**

1. Nomenclature for Latin words consisting of 2 or 3 words is typed in italic and used for plants, animals, insects, microorganisms, and diseases. Full name of chemicals is used for the first time. General name or generic can also be used.
2. Units of measurements use International System (IS).
3. Abbreviations are written using standard Tropical Animal Science Journal, as follows:  
 °C degree Celsius  
 ANOVA analysis of variance  
 ATP adenosine triphosphate  
 cal calorie  
 cfu colony-forming unit

- CoA coenzyme A
- CP crude protein ( $N \times 6.25$ )
- CV coefficient of variation
- d day(s)
- DM dry matter
- DNA deoxyribonucleic acid
- EDTA ethylenediaminetetraacetic acid
- F F-distribution (variance ratio)
- g gram
- GC gas chromatography
- GE gross energy
- GH growth hormone
- h hour(s)
- ha hectare
- hCG human chorionic gonadotropin
- HPLC high-performance liquid chromatography
- Hz hertz
- IU international unit
- J joule
- L liter
- LD<sub>50</sub> lethal dose 50%
- LSD least significant difference

m	meter
ME	metabolizable energy
min	minute(s)
mo	month(s)
n	sample size (used parenthetically or in footnotes)
NDF	neutral detergent fiber
No.	number (use only in tables, not in the text)
NRC	National Research Council
<i>P</i>	probability
PCR	polymerase chain reaction
RNA	ribonucleic acid
rpm	revolutions/minute (not to be used to indicate centrifugal force)
s	second(s)
SAS	Statistical Analysis System
SD	standard deviation (sample)
SE	standard error
sp.	species
ssp.	subspecies
<i>t</i>	t- (or Student) distribution
TDN	total digestible nutrients
UV	ultraviolet
V	volt
VFA	volatile fatty acid(s)
vol	volume
vol/vol	volume/volume (used only in parentheses)
vs.	versus
W	watt
wk	week(s)
wt	weight (use only in tables, not in the text)
yr	year(s)

4. Decimal to separate value in tables or texts should be written using dot (.).
5. Writing Heading
  - a. Headings should be written in capital letters, bold, centered, and include:  
ABSTRACT  
INTRODUCTION  
MATERIALS AND METHODS  
RESULTS  
DISCUSSION  
CONCLUSION  
CONFLICT OF INTEREST  
ACKNOWLEDGEMENT  
REFERENCES
  - b. Sub-heading, the first letter for each word should be capitalized, centered, and bold.
  - c. Sub-sub-heading, only the first word should be capitalized, written at the beginning of the paragraph, bold, and followed by full stop. The following text should be typed double hit from the sub-sub-heading.

#### MANUSCRIPT REVIEW AND EDITORIAL POLICY

The suitability of manuscripts for publication in Tropical Animal Science Journal is judged by peer reviewers and editorial board. All the review process are conducted in double-blind review. Chief Editor handles all correspondence with the author and makes the final decision as to whether the paper is recommended for acceptance, rejection, or needs to be returned to the author for revision.

Chief Editor and Section Editors will evaluate the submitted papers on prequalification step for the suitability of further review process. The manuscripts will be evaluated by two or three qualified peer reviewers selected by Chief Editor and Section Editors. The peer reviewers should examine the manuscript and return it with their recommendation to the Chief Editor or Section Editors as soon as possible, usually within 3 weeks. If one of peer reviewers recommends rejection,

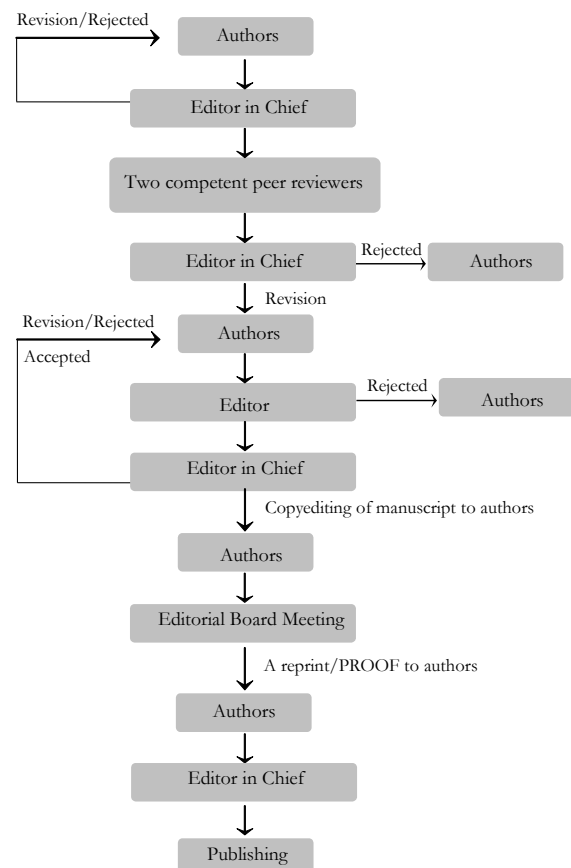
the Chief Editor will ask a third reviewer or Section Editors to decide the acceptance or rejection of the paper.

Papers needing revision will be returned to the authors, and the authors must return the revised manuscript to the Chief Editor via OJS of Tropical Animal Science Journal. The Chief Editor sends the revised manuscript to the Section Editor to check whether the manuscript has been revised as suggested by peer reviewers. The Section Editor could recommend to the Chief Editor that the manuscript be returned to the authors, accepted, or rejected within 2 weeks. The Chief Editor will send an acceptance letter of the manuscript along with the invoice to the corresponding author(s). After the Chief Editor sends the acceptance letter, the manuscript is forwarded to the technical editor for editing and layout. Later, the Chief Editor will send COPYEDITING and PROOF to authors before it is published.

There are four steps of revision process by authors: 1) revision manuscript to accommodate Section Editors suggestions (prequalification step) within 2 weeks; 2) revision manuscript to accommodate peer reviewer suggestions within 2-4 weeks; 3) revision to accommodate Section Editors suggestions within 2-4 weeks (if any); and 4) revision to accommodate editorial meeting suggestions within 1 week (if any). Manuscripts that exceed the revision deadline will be withdrawn. Authors may request for extension to Chief Editor before the revision expires. The time interval from the date the manuscript is submitted to the acceptance for publication varies, depending on the time required for review and revision process.

Manuscripts are rejected usually for 3 general reasons: 1) The topic of manuscript does not fit in the journal scope and may be better suited for publication elsewhere. 2) The content of the manuscripts does not meet Tropical Animal Science Journal standards; the data may be incomplete; the methodology

#### Manuscript Process



used is not appropriate; lack of novelties and no advancement of the existing knowledge; or there are no consistency among objectives, research design/method, evidence, and conclusion. 3) The manuscript are not written following Tropical Animal Science Journal guidelines in Instruction to Authors. These manuscripts may be rejected without review process. Manuscripts could also be rejected in the review process if Authors do not revise the manuscripts as suggested by reviewers and editorial board, also do not give response/rebuttal against the suggestions.

If the manuscript is rejected, the Chief Editor will notify the author with a statement of reasons for rejection. The decision letter issued by the Chief Editor is FINAL. For the accepted manuscript, the COPYEDITING of the manuscript will be sent to the corresponding author to ask for some typesetting corrections. Later, the corresponding author will also receive the final version of the manuscript as a PDF file. The PROOF should be read carefully and checked against the typed manuscript, and the corrections may be returned within 7 days. The final PROOF will be published in the specified edition.

#### **COPYRIGHTS AND CREATIVE COMMONS ATTRIBUTION LICENSE**

Authors submitting manuscripts should understand and agree that copyright of manuscripts of the article shall be assigned/transferred to Tropical Animal Science Journal. The statement to release the copyright to Tropical Animal Science Journal is stated in Form A. This work is licensed under a Creative Commons Attribution-ShareAlike 4.0 International License (CC BY-SA) where Authors and Readers can copy and redistribute the material in any medium or format, as

well as remix, transform, and build upon the material for any purpose, but they must give appropriate credit (cite to the article or content), provide a link to the license, and indicate if changes were made. If you remix, transform, or build upon the material, you must distribute your contributions under the same license as the original.

#### **MANUSCRIPT PUBLICATION FEE**

Author(s) are charged IDR 4,000,000,- for Indonesian author(s) or 400 USD for foreign author(s) for each article accepted for publication. Tropical Animal Science Journal only charges the author(s) for the article publication fee without any submission fee. For author consideration, all manuscripts withdrawn after being reviewed by peer-reviewers will be charged a price equal to the publishing fee starting from 2023.

The editorial office will send the invoice to the corresponding author(s) along with the acceptance letter of the manuscript, and they need to complete the payment within a specified time. The editorial office will send a payment receipt after the payment is successfully received. The accepted manuscripts will not be published until the APC is paid by the author(s).

#### **ADDRESS FOR CORRESPONDENCE**

##### **Editorial Board of Tropical Animal Science Journal**

Faculty of Animal Science Building, IPB University  
Jalan Agatis, Kampus IPB Dramaga, Bogor 16680, West Java,  
Indonesia

Phone: +62-251-8622841 / Fax: +62-251-8622842

E-mail: [mediapeternakan@apps.ipb.ac.id](mailto:mediapeternakan@apps.ipb.ac.id);

[mediapeternakan@yahoo.co.id](mailto:mediapeternakan@yahoo.co.id)

Website: <https://journal.ipb.ac.id/index.php/tasj>



## POLICY OF ETHICS AND MALPRACTICES

### Tropical Animal Science Journal

#### Background

Tropical Animal Science Journal has to ensure that all published works within the journal follow the ethical principles of academic publishing. Therefore, it is essential to set an ethical standard for all stakeholders to create a conducive environment and avoid problems that may arise due to a certain conflict of interest. This document presents the policy of Tropical Animal Science Journal on the respective publication ethics and malpractice statement as guidance for all stakeholders of the journal.

#### Authorship

All persons listed as authors should qualify for authorship. Such authorship should be limited to persons who have contributed significantly to the conception, design, execution, data acquisition, data analysis, or interpretation of the manuscript. All other persons who have participated in certain important aspects of the research but do not qualify as authors should be acknowledged. Authorship is the responsibility of the corresponding author; he or she should ensure that all appropriate co-authors are included in the manuscript.

Request to add or remove author(s) or to arrange the author names of the accepted manuscript before it is published, must be explained by a letter to the Chief Editor. This letter must be signed by all authors of the paper. An author statement form (Form A) must also be updated by every author and resubmitted to Chief Editor.

#### Responsibilities of authors

Authors are obliged to follow in peer review process set by Tropical Animal Science Journal. Authors are responsible for providing original and accurate data (no plagiarism, no fraudulent data) concerning the manuscript submitted and providing the data when requested. The submitted manuscript should not be under consideration or accepted for publication elsewhere. Where parts of the data have been published elsewhere, the sources must be acknowledged or cited accordingly. When reproducing data from other sources, proper citation and permission are required. Authors should ensure that studies involving animals are performed according to animal ethics and welfare. Any potential conflict of interest has to be declared, including any financial, personal, or other relationships with other people or organizations related to their work that could affect their work. All sources of financial support for the research project and study sponsor(s) (if any) and their role in the research or study should be disclosed in the Acknowledgement. Authors are requested to be willing to publish corrections, clarifications, retractions, and apologies when needed.

#### Responsibilities of reviewers

Reviewers are requested to assist in improving the quality of the manuscript through an objective review process within a scheduled period and contribute to the decision-making process on the manuscript. If reviewers find any published or submitted content similar to that under review, the editor has to be informed. Reviewers should have no conflict of interest concerning the research, the authors and/or the research funders. Any confidentiality of the information supplied by the editor or author should be maintained.

#### Responsibilities of editors

Editors have the complete responsibility and authority to accept or reject an article. They should have no conflict of interest about articles they accept or reject. Editors should be objective and fair when conducting their duties without making any discrimination on gender, ethnicity, religion, political view, or geographical origin of the authors. Editors should also accept

manuscripts based on academic merit and without commercial influence. The anonymity of reviewers should be preserved by editors.

#### Conflict of Interest

The corresponding author must clarify to the Editor any potential conflict of interest related to any financial, personal, or other relationships with other people or organizations related to the material discussed in the manuscript. All sources of the research funding should also be explicitly stated in the manuscript.

#### Human and animal ethics issues

If the work involves the use of animal or human subjects, the author should ensure and state in the Materials and Methods that all procedures were performed in compliance with relevant laws and institutional guidelines and that the appropriate institutional committee(s) have approved them. Authors should include a statement in the manuscript that informed consent was obtained for experimentation with human subjects. The privacy rights of human subjects must always be considered. For experiments involving humans, the author should ensure that the work described has been carried out in accordance with The Code of Ethics of the World Medical Association (Declaration of Helsinki) (<https://www.wma.net/policies-post/wma-declaration-of-helsinki-ethical-principles-for-medical-research-involving-human-subjects/>).

Authors should ensure that studies involving animals are performed according to animal ethics and welfare. All experimental animals should be reviewed by the Institutional Animal Care and Use Committee (IACUC) of similar committees of the organization at which the experiment was carried out, and the approval number was indicated in the Materials & Methods section. If necessary, the editor or reviewers may request a copy of the document to resolve the questions about IACUC approval and its related issues. TASJ has the right to reject any manuscript on the basis of unethical or misconduct in animal studies.

#### Publication misconduct

Authors, reviewers, and editors should maintain the integrity of the academic record during the whole process of publication. Business needs should be precluded from compromising intellectual and ethical standards.

When there are suspected cases of publication misconduct, such as redundant (duplicate) publication, plagiarism, fraudulent or fabricated data, undisclosed conflict of interest (CoI), or ethical problems with a submitted (or published) manuscript, TASJ will follow the Committee on Publication Ethics flowcharts (<https://publicationethics.org/guidance/Flowcharts>). The discussion will be carried out by the Editorial Board team, and the decision will be issued by the Chief Editor. There will also be penalties imposed on those who do not follow the rules.

The journal refers to the COPE Guidelines (<https://publicationethics.org/guidance/Guidelines>) by COPE (Committee on Publication Ethics) for policies not stated in these instructions. COPE Guidelines are formal COPE policies intended to advise editors and publishers on expected publication ethics practices.

#### Tropical Animal Science Journal

Faculty of Animal Science Building, IPB University  
Jalan Agatis, Kampus IPB Dramaga, Bogor 16680, West Java, Indonesia

Phone: +62-251-8622841 / Fax: +62-251-8622842

E-mail: [mediapeternakan@apps.ipb.ac.id](mailto:mediapeternakan@apps.ipb.ac.id);

[mediapeternakan@yahoo.co.id](mailto:mediapeternakan@yahoo.co.id)

Website: <https://journal.ipb.ac.id/index.php/tasj>

FORM A



# Tropical Animal Science Journal



Faculty of Animal Science Building, IPB University  
Jln. Agatis, Kampus IPB Dramaga, Bogor 16680, West Java, Indonesia  
E-mail: [mediapeternakan@apps.ipb.ac.id](mailto:mediapeternakan@apps.ipb.ac.id); [mediapeternakan@yahoo.co.id](mailto:mediapeternakan@yahoo.co.id)  
Website: <https://journal.ipb.ac.id/index.php/tasj>

## Author Statement Form

To:  
Editorial Board of Tropical Animal Science Journal

Herewith we submit a manuscript,

Title :

Corresponding author name :

Phone/e-mail :

To be published in Tropical Animal Science Journal (TASJ).

### Please read statements and check all check boxes

#### 1 Author Responsibility

We declare that the content of this manuscript or a major portion thereof has not been published, that it is not being submitted for publication elsewhere. It will not be submitted to any media during the review process unless we have officially withdrawn the manuscript from Tropical Animal Science Journal on a letter containing relevant reasons signed by all authors.

We ensure that the manuscript was prepared according to the TASJ guidelines

We agree to follow the entire process of manuscript selection according to Tropical Animal Science Journal procedures, including revising the manuscripts by following the Editor and Reviewers comments in a specified time. We understand and agree that if we do not follow the rules, we will be disqualified for publishing the manuscript in Tropical Animal Science Journal for two consecutive years since the letter was issued.

We declare that all listed names are entitled to become an author, and all have agreed with the final form of submitted manuscripts.

#### 2 Publication Fee

The corresponding author (or one of the co-authors) will be responsible for the **publication fee** stated in the manuscript charge policy.

#### 3 Author Contributions

We indicate the specific contributions of each author with initials, i.e.

Conception and design of the study: .....

Acquisition of data: .....

Analysis and/or interpretation of data: .....

Drafting the manuscript: .....

Critical review/revision: .....

Others: .....

#### 4 Disclosure of Conflicts of Interest

We certify that there is no conflict of interest with any financial, personal, or other relationships with other people or organizations related to the material discussed in the manuscript.

FORM A



# Tropical Animal Science Journal



Faculty of Animal Science Building, IPB University  
Jln. Agatis, Kampus IPB Dramaga, Bogor 16680, West Java, Indonesia  
E-mail: [mediapeternakan@apps.ipb.ac.id](mailto:mediapeternakan@apps.ipb.ac.id); [mediapeternakan@yahoo.co.id](mailto:mediapeternakan@yahoo.co.id)  
Website: <https://journal.ipb.ac.id/index.php/tasj>

**5 Institutional Animal Care and Use Committee (IACUC) Approval**

We ensure that studies involving animals were performed according to animal ethics and welfare. All animal experiments were reviewed by the Institutional Animal Care and Use Committee (IACUC) of similar committees of the organization at which the experiment was carried out, and the APPROVAL NUMBER was indicated in the first part of the Materials & Methods section.

THE APPROVAL NUMBER: ..... (letter attached)

**6 Copyright Transfer Agreement**

On the occasion of the final acceptance of this manuscript, the authors agree to transfer the article copyright to Tropical Animal Science Journal to publish the article in any media format, share, disseminate, index, and maximize the article's impact in any databases.

Thank you for your attention and collaboration.

Date \_\_\_\_\_

Author \_\_\_\_\_ E-mail \_\_\_\_\_

Author \_\_\_\_\_ E-mail \_\_\_\_\_

Author \_\_\_\_\_ E-mail \_\_\_\_\_

Author \_\_\_\_\_ E-mail \_\_\_\_\_

Author \_\_\_\_\_ E-mail \_\_\_\_\_

Author \_\_\_\_\_ E-mail \_\_\_\_\_

Author \_\_\_\_\_ E-mail \_\_\_\_\_

Author \_\_\_\_\_ E-mail \_\_\_\_\_