

ACKNOWLEDGEMENT

The Editorial Board would like to thank and express appreciation to all peer reviewers who have reviewed the manuscript for publication of Tropical Animal Science Journal Vol. 41 No. 1 Year 2018

Agung Purnomoadi	Faculty of Animal Science, Diponegoro University, Indonesia
Anang M Legowo	Faculty of Animal Science, Diponegoro University, Indonesia
Anis Muktiyani	Faculty of Animal Science, Diponegoro University, Indonesia
Anja Meryandini	Faculty of Mathematics and Science, Bogor Agricultural University, Indonesia
Anjas Asmara bin Samsudin	Faculty of Agriculture, Universiti Putra Malaysia, Malaysia
Anneke Anggraeni	Indonesian Research Institute for Animal Production
Asep Anang	Faculty of Animal Husbandry, Padjadjaran University, Indonesia
Bambang Suwignyo	Faculty of Animal Science, Gadjah Mada University, Indonesia
Budi Guntoro	Faculty of Animal Science, Gadjah Mada University, Indonesia
Cahyo Budiman	Faculty of Animal Science, Bogor Agricultural University, Indonesia
Cece Sumantri	Faculty of Animal Science, Bogor Agricultural University, Indonesia
Dewi Apri Astuti	Faculty of Animal Science, Bogor Agricultural University, Indonesia
Epi Taufik	Faculty of Animal Science, Bogor Agricultural University, Indonesia
Halimatun Yaakub	Faculty of Agriculture, Universiti Putra Malaysia, Malaysia
Henny Nuraini	Faculty of Animal Science, Bogor Agricultural University, Indonesia
I Gede Suparta Budisatria	Faculty of Animal Science, Gadjah Mada University, Indonesia
Imam Mustofa	Faculty of Veterinary Medicine, Airlangga University, Indonesia
Iman Hernaman	Faculty of Animal Husbandry, Padjadjaran University, Indonesia
Jakaria	Faculty of Animal Science, Bogor Agricultural University, Indonesia
Joelal Achmadi	Faculty of Animal Science, Diponegoro University, Indonesia
Loh Teck Chwen	Faculty of Agriculture, Universiti Putra Malaysia, Malaysia
Lucia Cyrilla	Faculty of Animal Science, Bogor Agricultural University, Indonesia
M. Winugroho	Indonesian Research Institute for Animal Production
Nancy Dewi Yuliana	Faculty of Agricultural Engineering and Technology, Bogor Agricultural University, Indonesia
Ni Wayan Kurniani Karja	Faculty of Veterinary Medicine, Bogor Agricultural University, Indonesia
Nur Rochmah Kumalasari	Faculty of Animal Science, Bogor Agricultural University, Indonesia
Nyoman Suthama	Faculty of Animal Science, Diponegoro University, Indonesia
R. Iis Arifiantini	Faculty of Veterinary Medicine, Bogor Agricultural University, Indonesia
Rukmiasih	Faculty of Animal Science, Bogor Agricultural University, Indonesia
Sofjan Iskandar	Indonesian Research Institute for Animal Production
Sugiharto	Faculty of Animal Science, Diponegoro University, Indonesia
Sumiati	Faculty of Animal Science, Bogor Agricultural University, Indonesia
Tjeppy D. Soedjana	Indonesian Research Institute for Animal Production
Triana Setyawardani	Faculty of Animal Science, Jenderal Soedirman University, Indonesia
Wasmen manalu	Faculty of Veterinary Medicine, Bogor Agricultural University, Indonesia
Yantyati Widyastuti	Indonesia Institute of Sciences

INSTRUCTIONS TO AUTHORS

Tropical Animal Science Journal

GENERAL INFORMATION

1. Manuscripts must be original, have not been published previously in any scientific journal, that manuscripts are not being submitted for publication elsewhere, and will not be submitted to any media during the review process, unless the authors have officially withdrawn the manuscripts from Tropical Animal Science Journal. The statement must be stated in a **statement of originality and copyright release form** (Form A). Tropical Animal Science Journal uses Similarity Check powered by iThenticate to prevent any suspected plagiarism in the manuscripts.
2. Manuscripts submitted are research topics which have no conflict with bioethical research.
3. Manuscripts encompass a broad range of research topics in tropical animal sciences: breeding and genetics, reproduction and physiology, nutrition, feed sciences, agrostology, animal products, biotechnology, behaviour, welfare, health, livestock farming system, integrated farming system, socio-economic, and policy.
4. The journal is published 3 (three) times a year, i.e. April, August, and December.

MANUSCRIPT FILE

1. Manuscripts are written in English and used standard scientific usage. Authors whose first language is not English should consult the manuscript with English editing service before submit it to Tropical Animal Science Journal.
2. Manuscripts should be prepared in Microsoft Word format, except for Graphs using Microsoft Excel program and Figures using JPEG or PDF format.
3. Manuscripts should be typed using Times New Roman fonts at 12 points.
4. Manuscripts should be typed double spaced except for Title, Tables, Title of Graphs/Figures, and appendix typed single spaced. Manuscripts are prepared in A4 paper, margins on all four sides are 3 cm, and total number of pages is 12-20.
5. Tables, Graphs, and Figures should be placed after the References of the manuscript.
6. Use page numbers and line numbers.
7. Manuscripts content should be arranged as the following order: Title, Name of the author(s) and their institutions, Abstract, Introduction, Methods (for Socio-Economic), Materials and Methods (for non Socio-Economic), Results, Discussion, Conclusion, Acknowledgment (if any), References.
8. Manuscripts and Form A should be submitted electronically through online system:
<http://journal.ipb.ac.id/index.php/tasj>
Authors are unable to submit electronically could send the files to email:
mediapeternakan@yahoo.co.id or
mediapeternakan@apps.ipb.ac.id

CONTENT OF MANUSCRIPTS

1. **Title** must be brief, clear, specific and informative which reflect the article content. The length of the title maximum 14 words. Each word of the title should be started with capitalized letter.
2. **Name of author(s)** are written as for references.
3. **Name of institution(s)** where the research was conducted must be accompanied with full address including institution/department, city, and country, and e-mail.
4. **Abstract** must be written in Bahasa and English, in single paragraph and no more than 250 words. Abstracts contain clear statement of introduction, objective, methods, results, significance of finding, and conclusion, with no references cited.
5. **Keywords** should be written in no more than 5 (five) words or phrases.
6. **Introduction** describes a brief background of the research, novelty, state of the arts, and objective(s). It should be written efficiently and supported by references. Extensive discussion of relevant literatures should be included in the discussion, not in the introduction.
7. **Materials and Methods**
 - a. It should be written clearly and completely containing a clear description of biological, analytical, and statistical procedures; so they can be repeated by other researchers. References of original methods/procedures must be stated and all modifications of procedures (if any) should be explained. Diets and animal conditions (breed, sex, age, body weight, and weighing conditions [i.e., with or without restriction of feed and (or) water]) also should be described clearly and fully.
 - b. Authors should state clearly information of commercial product and equipment used in the research, such as commercial name, product/equipment specification, city, and country.
 - c. Appropriate statistical methods should be used, although the biological mechanism should be emphasized. The statistical model, classes, blocks, and experimental unit must be designated. Consultation with a statistician is recommended to prevent any incorrect or inadequate statistical methods.
8. **Results**
 - a. Data should be presented in Tables or Figures when feasible. There should be no duplication of data in Tables and Figures. Sufficient and comprehensive data followed with some index of variation (e.g., SD, SE, etc.) and significance level (e.g., $P < 0.01$) should be presented to give a complete information and allow the reader to interpret the results of the experiment.
 - b. The text should explain or elaborate the tabular data, but numbers should not be repeated extensively within the text.

9. **Discussion** should be consistent and should interpret the results clearly and concisely, address biological mechanism and their significance, supported with suitable literatures. The discussion should show relevance between the results and the field of investigation and/ or hypotheses. Results that already described in the RESULTS section should not be repeated in the DISCUSSION section.
9. **Conclusion** should be written briefly in single paragraph, but reflects the experimental results obtained. Implication of results should be added stating what the findings of this research imply for animal production and (or) biology.
10. **Acknowledgement** (if any) to person(s) or institution(s) who help the experiment should be stated.
11. **References:**
 - a. We suggest authors to use reference manager applications, such as EndNote, Mendeley, Zotero, etc., to prepare citations and the list of references.
 - a. References should be the last 10 year publication, with minimum 80% of journal.
 - b. Citing a citation, such as Morris *in* Miftah *et al.* (2008), and using 'Anonym' as reference **are not allowed**.
 - c. Authors should not use proceeding, thesis, and dissertation as references.
 - d. The electronic publications are only allowed to use, if those are published by a competent source, such as journal and government or private institution. The accessed date should be put after the last sentence.
 - e. Reference citations in the text: Takahashi (2014) or (Takahashi, 2014); O'neil *et al.* (2006) or (O'neil *et al.*, 1974); Priyanto & Johnson (2011) or (Priyanto & Johnson, 2011).
 - f. References should be listed alphabetically by the author(s) last name(s) and the year of publication. For books, the order is all author(s), year, title of the book, name and place of publisher. For journals, author(s), year, title of the article(s), journal name, volume and number of publication, and pages. Journals should be abbreviated according to the conventional abbreviation used by Pubmed (<http://www.ncbi.nlm.nih.gov/nlmcatalog/journals>). For article in a book: author(s), year, title of the article, editor(s), book title, name and place of publisher. Some examples of references are presented below:

Book

- AOAC.** 2005. Official Methods of Analysis of AOAC International. 18th ed. Assoc. Off. Anal. Chem., Arlington.
- Jay, J. M., M. J. Loessner, & D. A. Golden.** 2005. Modern Food Microbiology. 7th ed. Springer, New York.

Journal

- O'Neil, M. R., G. P. Lardy, L. P. Reynolds, J. S. Caton, M. L. Johnson, & K. A. Vonnahme.** 2006. Effects of estradiol (E2) and linseed meal (LSM) on caruncular angiogenic factors in ovariectomized (OVX) ewes. *Biol. Reprod.* 75(Suppl. 1): 132 (Abstr.).
- Priyanto, R. & E. R. Johnson.** 2011. Muscle growth and distribution in fattening steer of different breeds. *Med. Pet.* 34:19-22.

Article in a Book

- Launchbaugh, K., J. A. Pfister, S. Lopez-Ortiz, & R. Frost.** 2007. Body Condition Affects Blood Alkaloid and Monoterpene Kinetics and Voluntary Intake of Chemically-Defended Plants by Livestock. In: K. E. Panter, T. L. Wierenga, & J. A. Pfister (Eds). *Poisonous Plants: Global Research and Solutions*. CAB International, Wallingford. p. 394-400.

Electronic Publications

- Scramlin, S. M., S. N. Carr, C. W. Parks, D. M. Fernandez-Dueñas, C. M. Leick, F. K. McKeith, & J. Killefer.** 2008. Effect of Ractopamine level, gender and duration of Ractopamine on belly and bacon quality traits. *Meat Sci.*
- Windisch, W., K. Schedle, C. Plitzner, & A. Kroismayr.** 2008. Use of phytogetic products as feed additives for swine and poultry. *J. Anim. Sci.* 86:E140-E148. http://jas.fass.org/cgi/content/full/86/14_suppl/E140. [29 December 2009].

- IUCN (International Union for Conservation of Nature and Natural Resources).** 2007. The IUCN Red List of Threatened Species: 2001 Categories and Criteria (Version 3.1). <http://www.iucnredlist.org/> [8 October 2007].

TABLES, FIGURES, AND GRAPHS

1. Table:

- a. Tables should be prepared using Microsoft Word Table function, select Insert>Table and follow the instruction. Please do not separate cells into rows and columns by using tabs and spaces. Herewith a sample table constructed correctly:

	Column head	Column head	Column head	Column head
Row head				
Row head				
Row head				

- b. Tables should be clear and could stand alone (giving a complete information and could be understood without referring to the body of manuscript). All tables should be cited in the text and should not duplicate data already given in the text or in figures.
- c. The title should be brief and clear. Only the initial word is capitalized, typed above the table, and numbered using Arabic number. The title for socio-economic should be completed with research time and location.
- d. Separating lines should be made horizontal (three lines) to separate head of column (treatment) and data, and closing line.
- e. Data should be completed with standard deviation (SD), standard error (SE), or coefficient of variation (CV) to figure out its variation.
- f. Footnote for statistical analysis should be written: "Means in the same column/row with different superscript differ significantly (P<0.05) or highly significant (P<0.01)".

g. Each abbreviation or symbols should be described in footnote.

2. Figure and Graph

- Title should be brief and clear, located under the Figure or Graph. Only the initial word is capitalized and numbered with Arabic number.
- Symbols and description of Figure and Graph should be defined in title that would give a complete information and could stand alone.
- Figures should be prepared and the types are readable at the final size of publication, one column (8 cm wide) or full-page width (17 cm wide). Use Palatino Linotype and Times New Roman font types only. A minimum type size of 8 points (after reduction) should be used. Please also remove unnecessary backgrounds and grid lines from graphs.
- For bar charts, should be made in 2-dimension and should use stripes as fill patterns, not a solid or block shading. Each axis should have a description and a unit.
- For line graphs, use a minimum stroke weight of 1 point for all lines. If multiple lines are to be distinguished, use solid, long-dash, short-dash, and dotted lines; avoid the use of gray or shaded lines. Please use the following symbols to identify curves and data points: □, ■, ○, ▲, △, ◇, ◆, +, and ×.
- Figures must have good resolution. Preferred format for figures are Word, JPEG, and PDF.

Minimum resolution is 300 dpi for color and grayscale figures and 600 dpi for line art. Please consider that color figures/images for print journal will be charged separately.

ADDITIONAL NOTES

- Nomenclature for Latin words consisting of 2 or 3 words is typed in italic and used for plants, animals, insects, microorganisms, and diseases. Full name of chemicals is used for the first time. General name or generic can also be used.
- Units of measurements use International System (IS).
- Abbreviations are written using standard Media Peternakan, as follows:

°C	degree Celsius
ANOVA	analysis of variance
ATP	adenosine triphosphate
cal	calorie
cfu	colony-forming unit
CoA	coenzyme A
CP	crude protein (N × 6.25)
CV	coefficient of variation
d	day(s)
DM	dry matter
DNA	deoxyribonucleic acid
EDTA	ethylenediaminetetraacetic acid
F	F-distribution (variance ratio)
g	gram
GE	gross energy

Example of Table, Figure, and Graph

Table 1. The average of feed consumption, water consumption, egg production, and feed conversion of laying quail during 8 weeks treatment

Variables	Treatments				
	T0	T1	T2	T3	T4
Feed consumption (g/quail/d)	19.94± 0.61 ^a	19.99±0.66 ^a	19.40± 0.65 ^a	19.49± 0.49 ^a	18.49± 0.44 ^b
Water consumption (mL/quail/d)	52.23± 6.96 ^c	62.94±5.33 ^b	68.28± 5.44 ^b	60.27± 4.65 ^b	80.16± 5.33 ^a
Egg production (%)	58.78± 2.72 ^a	59.04±1.79 ^a	59.57± 1.92 ^a	55.76± 4.74 ^a	45.05± 2.07 ^b
Egg mass (g/quail)	524.80±27.32 ^a	531.96±6.31 ^a	521.23±16.42 ^a	511.58±37.49 ^a	409.23±24.42 ^b
Feed conversion	2.41± 0.39	2.21±0.12	2.24± 0.08	2.10± 0.15	2.06± 0.09
IOFC (Rp/egg)	158.31±11.89 ^a	159.41±8.18 ^a	165.96± 7.65 ^a	146.33±22.61 ^a	99.50± 6.97 ^b

Note: T0= Control diet (without piperine), T1= T0 + piperine 15 mg/kg BW, T2= T0 + piperine 30 mg/kg BW, T3= T0 + piperine 45 mg/kg BW, T4= T0 + piperine 60 mg/kg BW. Means in the same row with different superscripts differ significantly (P<0.05).

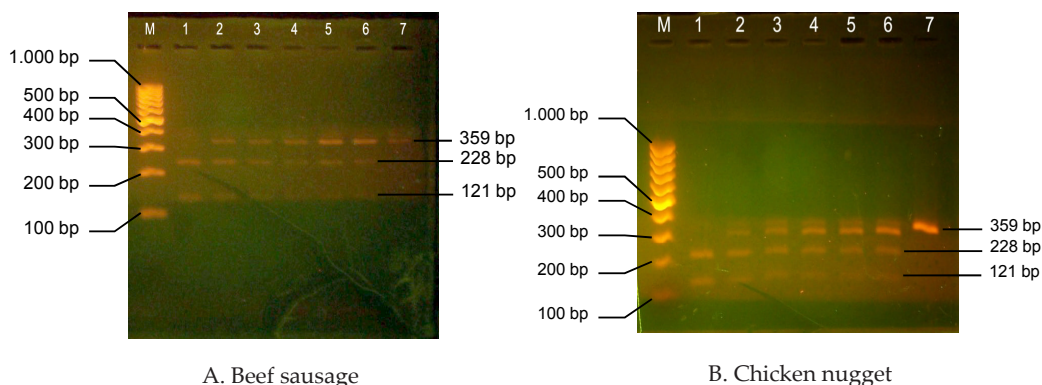


Figure 1. BseDI restriction profile of cytochrome b PCR product amplified from samples. (A) M= 100 bp ladder size standard; 1= pork (100%); 2= (beef 75% : pork 25%); 3= (beef 90% : pork 10%); 4= (beef 95% : pork 5%); 5= (beef 97% : pork 3%); 6= (beef 99% : pork 1%); 7= beef 100%. (B) M= 100 bp ladder, 1= pork (100%); 2= (chicken 75% : pork 25%); 3= (chicken 90% : pork 10%); 4= (chicken 95% : pork 5%); 5= (chicken 97% : pork 3%); 6= (chicken 99% : pork 1%); 7= chicken (100%).

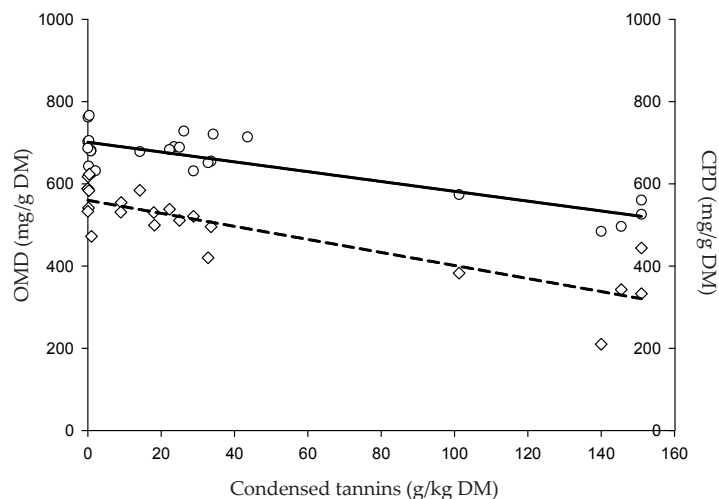


Figure 2. Relationships between dietary condensed tannin concentration and organic matter digestibility (OMD) (-o-, full regression line; $OMD = 701.2 - 1.19 CT$, $P < 0.001$, $R^2 = 0.701$) and crude protein digestibility (CPD) (-◇-, dashed regression line; $CPD = 559.7 - 1.59 CT$, $P < 0.001$, $R^2 = 0.730$) in the *in vivo* studies.

<p>GH h ha hCG HPLC Hz IU J L LD₅₀ LSD m ME min mo n NDF No. NRC P RNA rpm s SAS SD SE sp. ssp. t TDN UV V VFA vol vol/vol vs. W wk wt</p>	<p>growth hormone hour(s) hectare human chorionic gonadotropin high-performance (pressure) liquid chromatography hertz international unit joule liter lethal dose 50% least significant difference meter metabolizable energy minute(s) month(s) sample size (used parenthetically or in footnotes) neutral detergent fiber number (use only in tables, not in the text) National Research Council probability ribonucleic acid revolutions/minute (not to be used to indicate centrifugal force) second(s) Statistical Analysis System standard deviation (sample) standard error species subspecies t- (or Student) distribution total digestible nutrients ultraviolet volt volatile fatty acid(s) volume volume/volume (used only in parentheses) versus watt week(s) weight (use only in tables, not in the text)</p>
----------------------------------------------------------------------------------------------------------------------------------------------------------------------------------------------------------------------------------------------------------------------------------------------------------------------------------------	-----------------------------------------------------------------------------------------------------------------------------------------------------------------------------------------------------------------------------------------------------------------------------------------------------------------------------------------------------------------------------------------------------------------------------------------------------------------------------------------------------------------------------------------------------------------------------------------------------------------------------------------------------------------------------------------------------------------------------------------------------------------------------------------------------------------------------------------------------------------------------------------------------------------------------------------------------------------------------------------

yr year(s)

4. Decimal to separate value in tables or texts should be written using dot (.).
5. Writing Heading
 - a. Headings should be written in capital letters, bold, centered, and include:
 ABSTRACT
 INTRODUCTION
 MATERIALS AND METHODS
 RESULTS AND DISCUSSION
 CONCLUSION
 ACKNOWLEDGEMENT
 REFERENCES
 - b. Sub-heading, the first letter for each word should be capitalized, centered, and bold.
 - c. Sub-sub-heading, only the first word should be capitalized, written at the beginning of the paragraph, bold, and followed by full stop. The following text should be typed double hit from the sub-sub-heading.

MANUSCRIPT REVIEW AND EDITORIAL POLICY

The suitability of manuscripts for publication in Tropical Animal Science Journal is judged by peer reviewers and editorial board. All the review process are conducted in blind review. Chief Editor handles all correspondence with the author and makes the final decision as to whether the paper is recommended for acceptance, rejection, or needs to be returned to the author for revision.

Chief Editor and Section Editors will evaluate the submitted papers on praqualification step for suitability of further review process. The manuscripts will be evaluated by two or three qualified peer reviewers selected by Chief Editor and Section Editors. The peer reviewers should examine the manuscript and return it with their recommendation to the Chief Editor or Section Editors as soon as possible, usually within 3 weeks. If one of peer reviewers recommend rejection, the Chief Editor will ask a third reviewer or Section Editors to decide the acceptance or rejection of the paper.

Papers needing revision will be returned to the authors, and the author must return the revised manuscript to the Chief Editor via OJS of Tropical Animal Science Journal. Chief Editor send the revised manuscript to Section Editors to check whether the manuscript is revised as suggested by peer reviewers. Sections Editors could give recommendation to Chief Editor that the manuscript should return to authors, accept, or reject within 2 weeks. After acceptance by Section Editors, manuscript is forwarded to technical editor to be layout for editorial board meeting. Chief Editor would send an acceptance letter announcing the publication issue attached with manuscript reprint to authors.

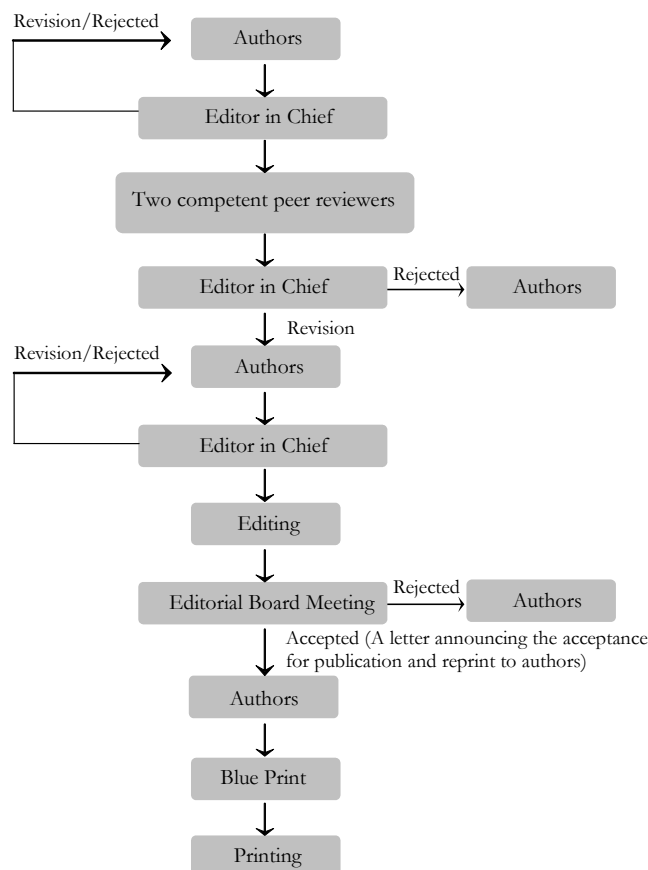
There are three steps of revision process by authors: 1) revision manuscript to accomodate peer reviewer suggestions within 2-4 weeks; 2) revision to accomodate Section Editors suggestions within 2-4 weeks (if any); and 3) revision to accomodate editorial meeting suggestions within 1 weeks (if any). Manuscripts that exceed the revision deadline will be withdrawn. Authors may request for extension to Chief Editor before the revision expires. The time interval from the date the manuscript is submitted to the acceptance for publication varies, depending on the time required for review and revision. Manuscripts are rejected usually for 3 general reasons: 1) The topic of manuscript does not fit in the journal scope and may be better suited for publication elsewhere. 2) The substance of the manuscripts does not meet Media Peternakan standards; the data may be incomplete; the methodology used is not appropriate; lack of novelties and no advancement of the existing knowledge; or there are no consistency among objectives, research design/method, evidence, and conclu-

sion. 3) Manuscript are not written following Tropical Animal Science Journal guidelines in Intruction to Authors. These manuscripts may be rejected without review process. Manuscripts could also be rejected in the review process if Authors do not revise the manuscripts as suggested by reviewers and editorial board, also do not give response/rebuttal against the suggestions.

If manuscript is rejected, the author will be notified by Chief Editor with a statement of reasons for rejection. The author may appeal to Chief Editor if he or she believes an unfair judgement has been made which enclose the author's reasons. Chief Editor will review and discuss the reasons with Section Editors responsible for the manuscript, and later decide whether to accept or deny the appeal.

The author(s) will receive the final version of the manuscript as a PDF file. PROOF of all manuscripts will be provided to the corresponding author. The PROOF should be read carefully, checked against the typed manuscript, and the corrections may be returned within 3 days. Authors submitting manuscripts should understand and agree that copyright of manuscripts published are held by Tropical Animal Science Journal. The statement to release the copyright to Tropical Animal Science Journal is stated in Form A. Copyright encompass exclusive rights to reproduce, to distribute, and to sell any part of the journal articles in all form and media. The reproduction of any part of this journal, its storage in databases and its transmission by any form or media will be allowed only with a written permission from Tropical Animal Science Journal.

Manuscript Process



MANUSCRIPT PUBLICATION FEE

Author(s) are charged IDR 2,000,000,- for Indonesian author(s) or 250 US\$ for foreign author(s) for each article accepted for publication. Tropical Animal Science Journal only charges Author(s) for the article publication fee, without any submission fee.

Photo page(s) will be charged separately. For printed page that contains colored figure, Author(s) will be asked to pay 90 US\$ (IDR 900,000,-) per page.

The journal office will send the invoice to the corresponding author along with the PROOF of the accepted manuscript and they need to complete the payment process before being published. Corresponding authors will get 10 (ten) reprints and 1 (one) exemplar of the journal.

ADDRESS FOR CORRESPONDENCE

Editorial Board of Tropical Animal Science Journal
 Faculty of Animal Science Building,
 Bogor Agricultural University
 Jln. Agatis, Kampus IPB Darmaga, Bogor,
 Indonesia 16680
 Telephone/Facsimile: +62 251 8421692
 E-mail: mediapeternakan@yahoo.co.id,
 mediapeternakan@apps.ipb.ac.id
 Website: <http://journal.ipb.ac.id/index.php/tasj>

POLICY OF ETHICS AND MALPRACTICES

Tropical Animal Science Journal

Background

Tropical Animal Science Journal has to ensure that all published works within the journal follow ethical principles on academic publishing. It is therefore essential to set an ethical standard for all stakeholders to create a conducive environment and to avoid problems that may arise due to a certain conflict of interest. This document presents the policy of Tropical Animal Science Journal on the respective publication ethics and malpractice statement as guidance for all stakeholders of the journal.

Publication and authorship

All persons listed as authors should qualify for authorship. Such authorship should be limited to persons who have contributed significantly to the conception, design, execution, data acquisition, data analysis or interpretation of the manuscript. All other persons who have participated in certain important aspects of the research but do not qualify as authors, then they should be acknowledged. Authorship is a responsibility of the corresponding author; he or she should ensure that all appropriate co-authors are included in the manuscript. The corresponding author, on behalf of all co-authors, should submit a form (Form A) stating that all of them have seen and approved the final version of the manuscript and have agreed to submit it for publication. Request to add or remove author(s) or to arrange the author names of the accepted manuscript before it is published, must be sent to Chief Editor.

Responsibilities of authors

Authors are obliged to follow in peer review process set by Tropical Animal Science Journal. Authors are responsible to provide original and accurate data (no plagiarism, no fraudulent data) concerning the manuscript submitted, and to provide the data when they are requested. The submitted manuscript should not be under consideration or accepted for publication elsewhere. Where parts of the data have been published elsewhere, the sources have to be acknowledged or cited accordingly. When reproducing data from other sources, proper citation and permission are required. Authors should ensure that studies involving animals are performed according to animal ethics and welfare. Any potential conflict of interest has to be declared including any financial, personal, or other relationships with other people or organizations related to their work that could affect their work. All sources of financial supports for the research project and study sponsor(s) (if any) along with their role in the research or study, should be disclosed in the Acknowledgement. Authors are requested to be willing to publish corrections, clarifications, retractions and apologies when needed.

Responsibilities of reviewers

Reviewers are requested to assist in improving the quality of the manuscript through an objective review process within a scheduled period of time, and to contribute to the decision-making process on the manuscript. If reviewers find any published or submitted content similar to that under review, the editor has to be informed. Reviewers should have no conflict of interest with respect to the research, the authors and/or the research funders. Any confidentiality of information supplied by the editor or author should be maintained.

Responsibilities of editors

Editors have the complete responsibility and authority to accept or reject an article. They should have no conflict of interest with regard to articles they accept or reject. Editors should be objective and fair when conducting their duties without making any discrimination on gender, ethnic, religion, political view or geographical origin of the authors. Editors should also accept manuscripts on the basis of academic merit and without commercial influence. Anonymity of reviewers should be preserved by editors.

Publishing ethics issues

Authors, reviewers and editors should maintain the integrity of the academic record during the whole process of publication. Business needs should be precluded from compromising intellectual and ethical standards.

Animal ethics issues

Authors should ensure that studies involving animals are performed according to animal ethics and welfare. All experimental animals should be cared for and used in compliance with international, national or local regulations. The authors should state explicitly in a statement/letter including the name of ethics authority and the approval number, that experiments were approved by an authority concerning the compliance with animal ethics and welfare.

Authors could refer to International Standards for Editors and Authors (<http://publicationethics.org/international-standards-editors-and-authors>) by COPE (Committee on Publication Ethics) for policies that are not stated in this instructions.

Tropical Animal Science Journal

Faculty of Animal Science Building,
Bogor Agricultural University
Jln. Agatis, Kampus IPB Darmaga, Bogor,
Indonesia 16680
Telephone/Facsimile: +62 251 8421692
E-mail: mediapeternakan@yahoo.co.id,
mediapeternakan@apps.ipb.ac.id
Website: <http://journal.ipb.ac.id/index.php/tasj>



Tropical Animal Science *Journal*



Faculty of Animal Science Building, Bogor Agricultural University
Jln. Agatis, Kampus IPB Darmaga, Bogor Indonesia 16680
Phone/Fax: +62 251 8421692
E-mail: mediapeternakan@apps.ipb.ac.id; mediapeternakan@yahoo.co.id
Website: <http://journal.ipb.ac.id/index.php/tasj>

Statement of Originality

To:
Editorial Board of Tropical Animal Science Journal

Herewith we submit a manuscript,

Title : _____

Author (s) : 1.....
2.....
3.....
4.....
5.....

Institution : 1.....
2.....
3.....
4.....
5.....

To be published in Tropical Animal Science Journal. We declare that the content of this manuscript or a major portion thereof has not been published, that it is not being submitted for publication elsewhere, and it will not be submitted to any media during the review process, unless we have officially withdrawn the manuscript from Tropical Animal Science Journal on a letter containing relevant reasons signed by all of authors.

We agree to follow the entire process of manuscript selection in accord to Tropical Animal Science Journal procedures, including revising the manuscripts by following the Editor and Reviewers comments in a specified time. We understand and agree that if does not follow the rules will be disqualified for publishing manuscript in Tropical Animal Science Journal for 2 consecutive years since the letter issued.

We declare that all listed names are entitled to become an author and all have agreed the final form of submitted manuscripts.



Tropical Animal Science

Journal



Faculty of Animal Science Building, Bogor Agricultural University
Jln. Agatis, Kampus IPB Darmaga, Bogor Indonesia 16680
Phone/Fax: +62 251 8421692
E-mail: mediapeternakan@apps.ipb.ac.id; mediapeternakan@yahoo.co.id
Website: <http://journal.ipb.ac.id/index.php/tasj>

For correspondence, please contact us at:

Name :
Address :

Phone/e-mail :

Thank you for your attention and collaboration.

Author _____
Author _____
Author _____
Author _____
Author _____

E-mail _____
E-mail _____
E-mail _____
E-mail _____
E-mail _____



Tropical Animal Science *Journal*



Faculty of Animal Science Building, Bogor Agricultural University
Jln. Agatis, Kampus IPB Darmaga, Bogor Indonesia 16680
Phone/Fax: +62 251 8421692
E-mail: mediapeternakan@apps.ipb.ac.id; mediapeternakan@yahoo.co.id
Website: <http://journal.ipb.ac.id/index.php/tasj>

Copyright Release Form

We are the authors of a manuscript,

Title :

Author (s) : 1.....
2.....
3.....
4.....
5.....

Institution : 1.....
2.....
3.....
4.....
5.....

agree to release to the Tropical Animal Science Journal all control over the manuscript including rights to reproduce, to distribute, and to sell as part of the journal.

Author _____

E-mail _____

Author _____

E-mail _____

Author _____

E-mail _____

Author _____

E-mail _____

Author _____

E-mail _____