

SUPPORTING INFORMATION

The treatment of canine transmissible venereal tumors in a male dog through surgery and chemotherapy[†]

Made Gede Adi Surya Saputra^{1*}, I Wayan Wirata², I Gusti Ngurah Sudisma²

¹ Veterinary Professional Program, Faculty of Veterinary Medicine, Udayana University, Denpasar, Indonesia

² Veterinary Surgery and Radiology Laboratory, Faculty of Veterinary Medicine, Udayana University, Denpasar, Indonesia

[†] Electronic Supplementary Information (ESI) available.

See DOI: <https://dx.doi.org/10.29244/avl.9.2.35-36>

S1 Results of tissue histopathology examination of Spring dog

Figure S1 depicts the transmissible venereal tumor cells.

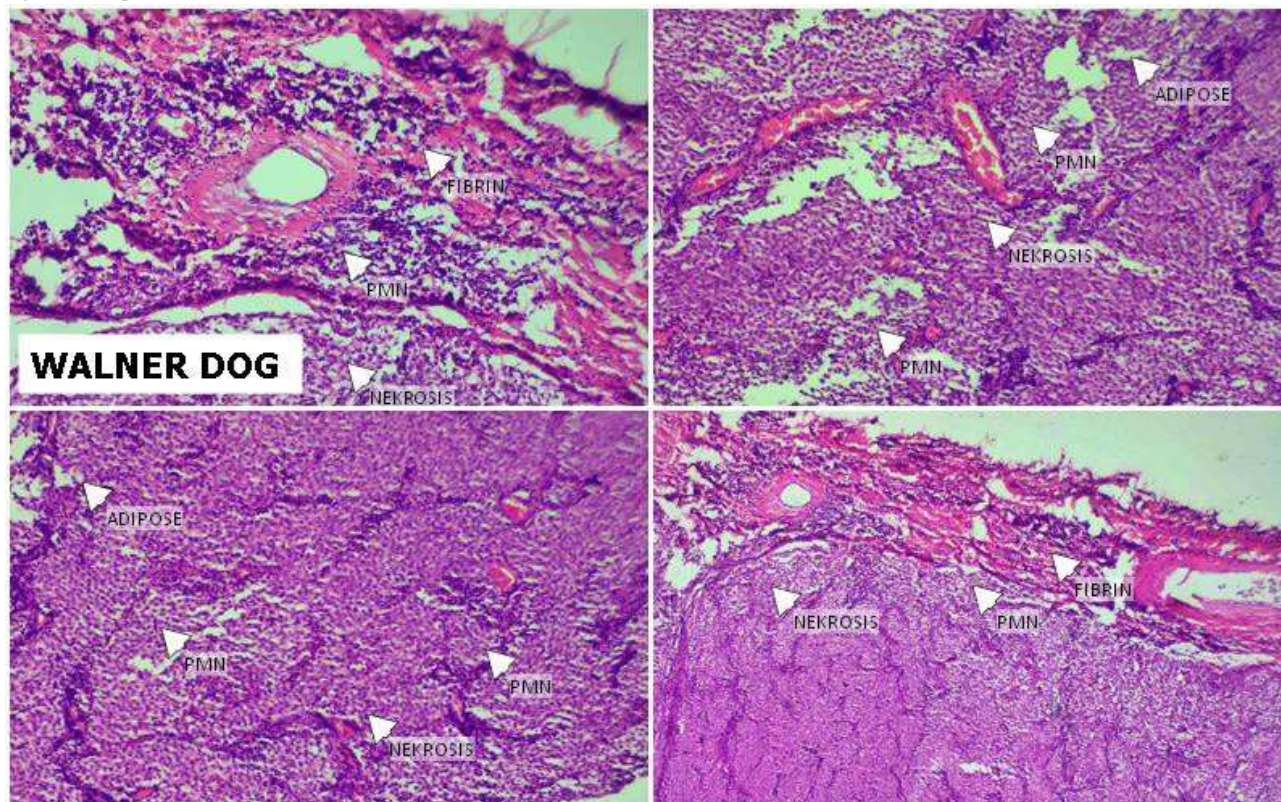


Figure S1 Tissue Histopathology (Hematoxylin eosin); TVT cells are characterized by large, round to oval cells with basophilic cytoplasm (blue or purple on staining) and well-defined, prominent vacuoles with nuclei that appear large and dark purple, with moderately dense chromatin. Active fibrin accumulation occurs in response to inflammation or tissue damage, which often accompanies tumor growth. There is an accumulation of neutrophilic inflammatory cells and lymphocytes, which are usually present in response to tumor growth. Some areas showed cellular debris or necrosis, which may indicate a malignant tumor causing damage to the surrounding tissue. The cells were found in clusters or in diffuse patterns.

S2 Results of hematology and blood chemistry examination of Spring dog

Table S2 shows the presence of leukocytosis and thrombocytopenia.

Parameters	Result		Normal Range
	7 days prior to surgery	1 day prior to surgery	
White Blood Count (WBC) ($10^3/\mu\text{L}$)	10.83	20.67 (High)	6.0-17.0
Lymphocyte ($10^3/\mu\text{L}$)	6.54 (High)	15.32 (High)	0.8-5.1
Mid Size Cell ($10^3/\mu\text{L}$)	0.75	1.61	0.0-1.8
Granulocyte ($10^3/\mu\text{L}$)	3.54 (Low)	3.74 (Low)	4.0-12.6
Lymphocyte (%)	60.4 (High)	74.1 (High)	12.0-30.0
Mid Size Cell (%)	6.9	7.8	2.0-9.0
Granulocyte (%)	32.7 (Low)	18.1 (Low)	60.0-83.0
Red Blood Cell ($10^6/\mu\text{L}$)	6.89	6.28	5.50-8.50
Hemoglobin (g/dL)	15.3	13.5	11.0-19.0
Mean Corpuscular Hemoglobin Concentration (g/dL)	34.7	33.6	30.0-38.0
Mean Corpuscular Hemoglobin (pg)	22.2	21.5	20.0-25.0
Mean Corpuscular Volume (fL)	63.8	64.1	62.0-72.0
Red Cell Distribution Width Coefficient Variation (%)	12.9	12.5	11.0-15.5
Red Cell Distribution Width Standart Deviation (fL)	38.1	37.3	20.0-80.0
Hematocrit (%)	44.0	40.3	39.0-56.0
Platelet ($10^3/\mu\text{L}$)	37 (Low)	39 (Low)	117-460
Mean Platelet Volume (fL)	7.5	7.4	7.0-12.9
Platelet Distribution Width (fL)	5.2 (Low)	14.8	5.0-20.0
Procalcitonin (%)	0.028 (Low)	0.029 (Low)	0.100-0.500